

MILKCORD®/SP/BUTYL

Corrugated alimentary suction and discharge hose



Marking: Milkcord®/SP/Butyl Milkhose/Milchschauch S/D - PN 10 bar - EG 1935/2004 - BfR XXI Kat. 2 - FDA - CFR 21§177.26.00 - Phtalates free - BPA free - PAH free - 96% Alcohol

Norm	BfR XXI:2002 (cat. 2), EN ISO 1307:2008, EU 1935/2004, FDA (CFR 21 § 177.2600)	Construction tube	Smooth seamless, taste and odourless, Phthalates free, Bisphenol A (BPA) free
Working pressure	10 bar	Color tube	White
Bursting pressure	30 bar	Compound cover	Modified elastomer
Vacuum	0,90 bar	Cover	Fabric finish, Flat corrugated
Min. temperature	-30 °C	Color cover	Blue
Max. temperature	+120 °C	Resistance tube	Up to max. 96% alcohol
Max. temperature steam cleaning	+130 °C	Resistance cover	Abrasion resistant, Microbes resistant, UV resistant, Weather resistant
Max. cleaning time with steam	30 minutes without pressure	Reinforcements	2 steel wire helix, Textile plies
Compound tube	Butyl		

Art.-no.	Ø Inner (mm)	Wall (mm)	Ø Outer (mm)	Bending radius (mm)	Weight (kg/mtr)	Length (mtr)
3457032000	32,0	6,0	44,0	70	0,950	40
3457038000	38,0	6,0	50,0	80	1,100	40
3457050000	51,0	6,5	64,0	100	1,450	40
3457063000	63,0	7,0	77,0	130	1,900	40
3457075000	76,0	7,5	91,0	160	2,450	40
3457100000	102,0	8,0	118,0	310	3,700	20

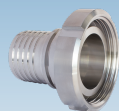
Application: The hose is suitable for transport of milk and milky products, vegetable fats and oils, fruit juices, oil and fatty foodstuff and alcoholic liquids with an alcohol percentage of 96%. The butyl tube is very suitable for higher temperatures and higher concentrations of acids and alkalis and therefore extremely suitable for CIP cleaning. The special designed microbes resistant cover protects against the formation of mold and bacteria. The hose is very flexible due to the corrugated cover in combination with the twin-spiral construction and therefore suitable for loading and unloading of tanks. The Milkcord®/SP/Butyl can also be handled easily due to the light weight construction.

Remark:

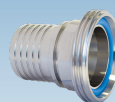
- Cutted length possible
- Please pay attention to the cleaning instructions which you can find in the footer of our homepage

We recommend assembly with

5547
Food couplings



5548
Food couplings



5561
Safety clamps

