

## Polyethylene food hose and pharmaceutical hose, medium-heavy

### Applications

- flexible hose/ ducting for gases and for dust, powder, fibres
- food industry, pharmaceutical industry: foodstuff, pharmaceutical
- conveying of dry foods e.g. rice, cereals, sugar, milk powder, powders, coffee, tea, grains, flour, frozen foods
- mixer, dryer, packaging machine, bulk-bag (big bag)-charging and discharging, mill
- tobacco industry: cigarette machine, tobacco conveying
- galvanic extraction
- chemical industry: chemical vapours, vapour return hose at loading arm, paint steam, spray mist extraction

### Properties

- medium-heavy duty
- Food grade wall, complies with: FDA 21 CFR 177.1520 3.1 and 3.2, EU-Directive 10/2011 and EC 1935/2004
- odourless and tasteless
- good resistance to alkalis and acids
- extremely good resistance to chemicals
- manufacturing process acc. GMP EC 2023/2006
- conforms to RoHS guideline
- REACH according to --> Technology / Technical Information / REACH

### Temperature Range

- 35 °C to 80 °C

### Design

- AIRDUC® profile hose
- spring steel wire firmly embedded in wall
- wall: special polyethylene (PE)
- wall thickness 0,8 mm approx.

### Delivery variants

- further diameters and lengths available on request
- transparent (standard)
- special colours: full coloured
- customer-specific branding

I.D.	outer Ø	Pressure	Vacuum	Bending Radius	Weight	Dimensions in Stock	Production Lengths	Order No.
(in / mm)	(mm)	(bar)	(bar)	(mm)	(kg/m)	(m)	(m)	
1 / 25	30.00	1,455	0,570	17.00	0.21	-	10 15	362-0025-0000
- / 28	34.00	1,375	0,540	20.00	0.25	-	10	362-0028-0000
- / 30	37.00	0,980	0,520	22.00	0.21	-	10	362-0030-0000
1,25 / 32	39.00	0,920	0,505	23.00	0.23	-	10	362-0032-0000
1,5 / 38	45.00	0,780	0,475	26.00	0.26	-	10	362-0038-0000
- / 40	47.00	0,740	0,460	27.00	0.28	-	10	362-0040-0000
2 / 50-51	57.00	0,595	0,395	32.00	0.34	10	-	362-0050-0000
- / 55	62.00	0,540	0,350	35.00	0.37	-	10	362-0055-0000
2,36 / 60	67.00	0,500	0,320	37.00	0.40	-	10	362-0060-0000
2,5 / 63-65	72.00	0,460	0,275	40.00	0.44	-	10	362-0065-0000
- / 70	79.00	0,430	0,230	44.00	0.56	-	10	362-0070-0000
3 / 75-76	84.00	0,400	0,210	47.00	0.60	-	10	362-0075-0000
- / 80	89.00	0,375	0,200	49.00	0.64	-	10	362-0080-0000
3,5 / 89-90	99.00	0,335	0,170	54.00	0.71	-	10	362-0090-0000
4 / 100-102	109.00	0,300	0,135	59.00	0.79	-	10	362-0100-0000
- / 110	119.00	0,275	0,120	64.00	0.86	10	-	362-0110-0000
4,72 / 120	129.00	0,250	0,115	69.00	0.94	-	10	362-0120-0000
5 / 125-127	134.00	0,240	0,090	72.00	0.98	10	-	362-0125-0000
6 / 150-152	159.00	0,200	0,090	84.00	1.16	-	10	362-0150-0000
6,3 / 160	169.00	0,190	0,075	89.00	1.24	-	10	362-0160-0000
8 / 200-203	210.00	0,150	0,060	110.00	1.55	-	10	362-0200-0000
- / 250	260.00	0,120	0,025	135.00	1.92	-	10	362-0250-0000

Overpressure and underpressure are recommended threshold operating values, products can be subjected to higher loads upon request. The bending radius is measured through the inside of the hose arch. The right to make technical modifications is reserved. All values determined at 20 °C and are approx. data. Additional information at [www.norres.com/en/technology/](http://www.norres.com/en/technology/).

## Accessories



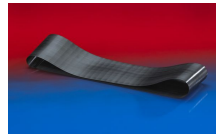
CLAMP 212



CLAMP 213



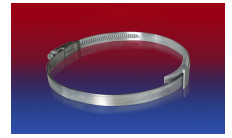
CLAMP 212 EC



CONNECT 228



CONNECT 223



CLAMP 210 BRIDGE  
CLAMP



CLAMP 217



CONNECT 270-271