

Antistatic food hose and pharmaceutical hose, medium-heavy and reinforced, stainless steel (INOX)

Applications

- flexible hose/ ducting for abrasive powder, bulk material, granulate and for gases
- food industry, pharmaceutical industry: foodstuff, pharmaceutical
- conveying of dry foods e.g. rice, cereals, sugar, milk powder, powders, coffee, tea, grains, flour, frozen foods
- vacuum conveying equipment, vacuum hopper, suction conveyor, dosing system
- pelleting machines/ tablet presses
- mixer, dryer, packaging machine, bulk-bag (big bag)-charging and discharging, mill
- explosion hazard area

Properties

- medium-heavy duty
- highly abrasion resistant
- Approved by an independent testing laboratory for the complete hose acc. to EU-Directive 10/2011, EC 1935/2004 and EU 2015/174, food grade polyurethane, complies with: FDA 21 CFR 177.2600

- Approval acc. to EU-Directive 10/2011 (food simulant E) and EC 1935/2004
- odourless and tasteless
- microbe and hydrolysis resistant
- good resistance to oil, gasoline and chemicals
- very good low temperature flexibility
- Permanently antistatic wall: according to ISO 8031 electrical and surface resistance $<10^9 \Omega$ (according to TRGS 727 $<2,5 \cdot 10^8 \Omega \cdot m$ and NFPA 652 $10^8-10^9 \Omega$)
- in accordance with ATEX 2014/34/EU (1999/92/EC) and German TRGS 727: pneumatic transport of flammable dusts and bulk materials (Zone 20, 21, 22 inside), aspiration of combustible dusts (Zone 22 inside),
- in accordance with ATEX 2014/34/EU (1999/92/EC) and German TRGS 727: for conveying for flammable liquids (inside zone 0, 1, 2), for conveying for non-flammable liquids, for use in zone 1 and 2 (gases), for use in zone 0 (gases)
- manufacturing process acc. GMP EC 2023/2006
- conforms to RoHS guideline
- REACH according to --> Technology / Technical Information / REACH

Temperature Range

- 40 °C to 90 °C
- short time to 125 °C

Design

- AIRDUC® profile hose
- spring steel wire firmly embedded in wall
- spiral: stainless steel wire (INOX)
- wall: permanently antistatic premium ether-polyurethane (Pre-PUR®)
- wall thickness 1,0 mm approx.

Delivery variants

- further diameters and lengths available on request
- transparent (standard)
- customer-specific branding

I.D.	outer Ø	Pressure DIN 26057 (50% Elongation)	Vacuum DIN 26057 (axially fixed)	Bending Radius	Weight	Dimensions in Stock	Production Lengths	Order No.
(in / mm)	(mm)	(bar)	(bar)	(mm)	(kg/m)	(m)	(m)	
1 / 25	33.00	2,640 (4,49)	0,680 (1,00)	22.00	0.22	-	5 10	351-0025-1018
1,25 / 32	40.00	2,090 (3,56)	0,440 (1,00)	28.00	0.28	10	5	351-0032-1018
1,5 / 38	46.00	1,775 (3,02)	0,370 (1,00)	32.00	0.32	10	5	351-0038-1018
- / 40	48.00	1,690 (2,87)	0,355 (1,00)	33.00	0.34	10	-	351-0040-1018
2 / 50-51	58.00	1,365 (2,32)	0,285 (1,00)	39.00	0.41	10	5	351-0050-1018
2,36 / 60	68.00	1,145 (1,94)	0,235 (0,82)	45.00	0.49	10	5	351-0060-1018
2,5 / 63-65	73.00	1,055 (1,79)	0,220 (0,70)	48.00	0.59	-	5 10	351-0065-1018
- / 70	79.00	0,985 (1,67)	0,145 (0,83)	52.00	0.59	-	5 10	351-0070-1018
3 / 75-76	84.00	0,920 (1,56)	0,135 (0,72)	55.00	0.64	10	5	351-0075-1018
- / 80	89.00	0,865 (1,46)	0,125 (0,64)	58.00	0.68	10	5	351-0080-1018
3,5 / 89-90	99.00	0,770 (1,30)	0,110 (0,50)	64.00	0.75	-	5 10	351-0090-1018
4 / 100-102	109.00	0,695 (1,18)	0,105 (0,66)	70.00	0.97	10	5	351-0100-1018
- / 110	119.00	0,630 (1,07)	0,095 (0,54)	76.00	1.06	-	5 10	351-0110-1018

Overpressure and underpressure are recommended threshold operating values, products can be subjected to higher loads upon request. The bending radius is measured through the inside of the hose arch. The right to make technical modifications is reserved. All values determined at 20 °C and are approx. data. Additional information at www.norres.com/en/technology/.



I.D.	outer Ø	Pressure DIN 26057 (50% Elongation)	Vacuum DIN 26057 (axially fixed)	Bending Radius	Weight	Dimensions in Stock	Production Lengths	Order No.
(in / mm)	(mm)	(bar)	(bar)	(mm)	(kg/m)	(m)	(m)	
5 / 125-127	134.00	0,555 (0,94)	0,085 (0,42)	85.00	1.20	-	5 10	351-0125-1018
5,5 / 140	149.00	0,500 (0,84)	0,075 (0,33)	94.00	1.34	-	5 10	351-0140-1018
6 / 150-152	159.00	0,465 (0,79)	0,075 (0,37)	100.00	1.52	10	5	351-0150-1018
6,3 / 160	169.00	0,435 (0,74)	0,070 (0,32)	106.00	1.61	-	5 10	351-0160-1018
8 / 200-203	209.00	0,350 (0,59)	0,055 (0,2,0)	133.00	2.03	-	5 10	351-0200-1018

Accessories



CONNECT 246
FOOD



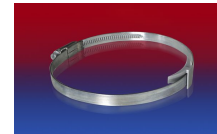
CLAMP 213



CLAMP 212



CONNECT MOULD
ASSEMBLY 233



CLAMP 210 BRIDGE
CLAMP



CONNECT 223



CONNECT TRI-
CLAMP FITTING 245



CONNECT DAIRY
FITTING 247



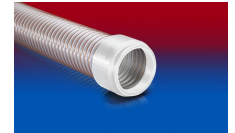
CLAMP 212 EC



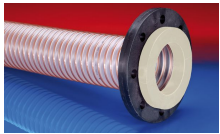
CONNECT 240 + 241
FOOD



CONNECT ASEPTIC
FITTING 249



CONNECT 245
FOOD



CONNECT 244
FOOD



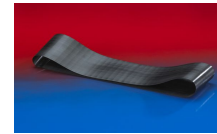
CLAMP 217



CONNECT 270-271



CONNECT 243
FOOD



CONNECT 228



CONNECT THREAD
FITTING 234

Overpressure and underpressure are recommended threshold operating values, products can be subjected to higher loads upon request. The bending radius is measured through the inside of the hose arch. The right to make technical modifications is reserved. All values determined at 20°C and are approx. data. Additional information at www.norres.com/en/technology/.